

日高町 Hidaka
平取町 Biratori
白鳥町 Shiratori
新ひたか町 Shinhitaka
浦幌町 Urahoro
標仙町 Samani
えりも町 Erimo

CYCLING AREAS

in Hidaka, Hokkaido

EASTERN HIDAKA AREA

Wide open spaces around Cape Erimo, the fascinating landscape of the Apoi Geopark area formed as a result of magma flows, and the mountainous area for stoic cyclists. Enjoy the typical scenery of Hokkaido.

[Online videos available](#)

[ひたかサイクル](#)

Access information [Car]

New Chitose Airport

● Hokkaido Expressway
● Doto Expressway
● Hidaka Expressway
● General road

● Sapporo ⇄ Hidaka (Hawa)
About 1150km 125km
● Sapporo ⇄ Hidaka (Monteou)
About 1150km 98km
● Sapporo ⇄ Biratori
About 1130km 99km
● Sapporo ⇄ Niikappu
About 2h 125km

● Sapporo ⇄ Gtose-Eriniwa JCT
About 1h35m 112km
● Shimukappu IC
About 15m 13km
● Hidaka (Hawa area)
About 60m 49km
● Biratori
About 10m 9km

● Numanohashi IC
About 3m 4km
● Hidakatomiki IC
About 17m 20km
● Hidakaatsuga IC
About 15m 15km

● Niikappu
About 5m 5km
● Shinhidaka
About 50m 42km
● Urakawa
About 20m 16km
● Samani
About 25m 23km
● Erimo
About 25m 129km

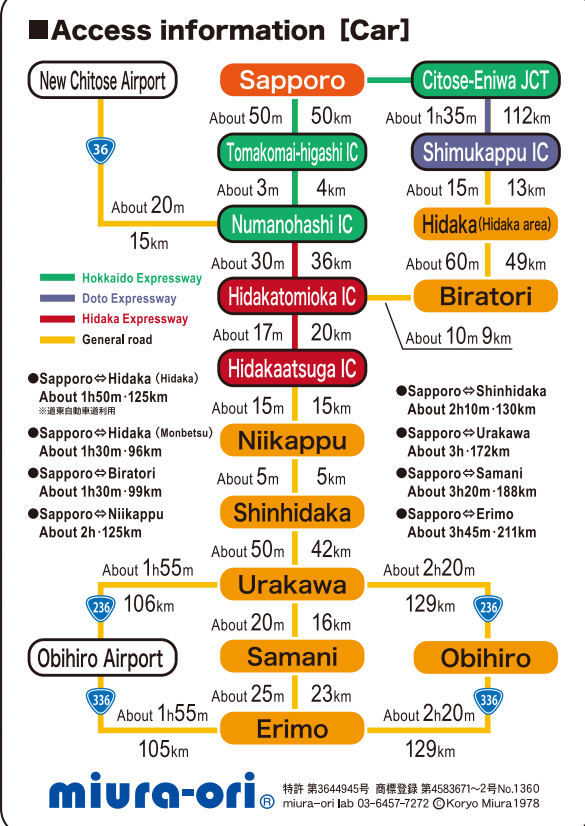
● Obihiro Airport
About 1h55m 105km

● Obihiro
About 2h20m 129km

miura-ori 株式会社 3648451号 札幌支店 第453871-2号No.1360
miura-ori@miura-ori.co.jp 011-6457-0772 ©Miura-Miura 1978

Wide open spaces around Cape Erimo,
the fascinating landscape of the Apoi Geopark area
formed as a result of magma flows,
and the mountainous area for stoic cyclists.
Enjoy the typical scenery of Hokkaido.

Wide open spaces around Cape Erimo,
the fascinating landscape of the Apoi Geopark area
formed as a result of magma flows,
and the mountainous area for stoic cyclists.
Enjoy the typical scenery of Hokkaido.



List of nine etiquette rules for horse farm visit

■Hometown of Racehorse, Hidaka Information Office
Various information including farm visits is provided for tourists
visiting the horse breeding area
Address: 175-2 Shizunai-kamimori, Shin-hidaka-cho Tel:0146-43-2121
Summer hours: Wed.-Sun, 9 am-5 pm; Mon. 9 am-12 pm Closed on Tue. except during
the Golden Week holidays and the Hokkaido Sales (Horse Sales 4 times a year).
Winter hours: Weekdays 9 am-4:30 pm; Sat. 9 am-12 pm
Closed on Sun., national holidays and during the New Year period

- List of nine etiquette rules for horse farm visit, and one additional rule for cyclists. The following nine rules are the minimum rules to be observed by visitors. Farms have agreed to accept visitors on condition that these rules are observed, so please make sure to follow them.

 - 1 Visiting hours vary by farm.
Ask the Information Office for the details.
 - 2 Ask the Information Office which farms are open to visitors.
 - 3 Follow instructions given to you by farm staff.
 - 4 Do not enter stables or paddocks without permission.
 - 5 Do not shout or make loud noise.
 - 6 Do not touch horses, as it is dangerous.
 - 7 Never feed horses.
 - 8 Smoking is prohibited
Please take your trash with you
 - 9 Please refrain from flash photography.

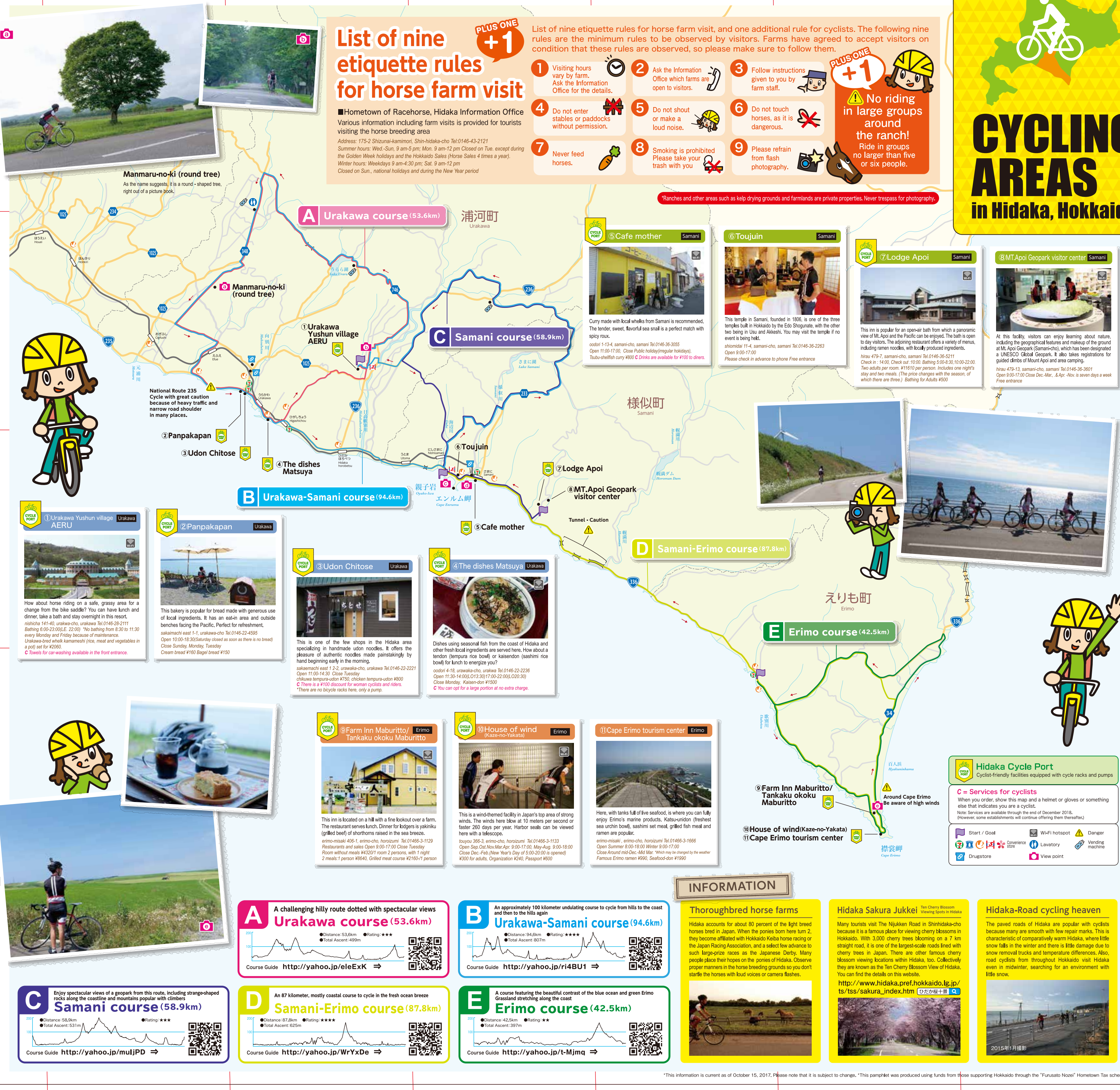
PLUS ONE

No riding in large groups around the ranch!

Ride in groups no larger than five or six people.

CYCLING AREAS

in Hidaka, Hokkaido

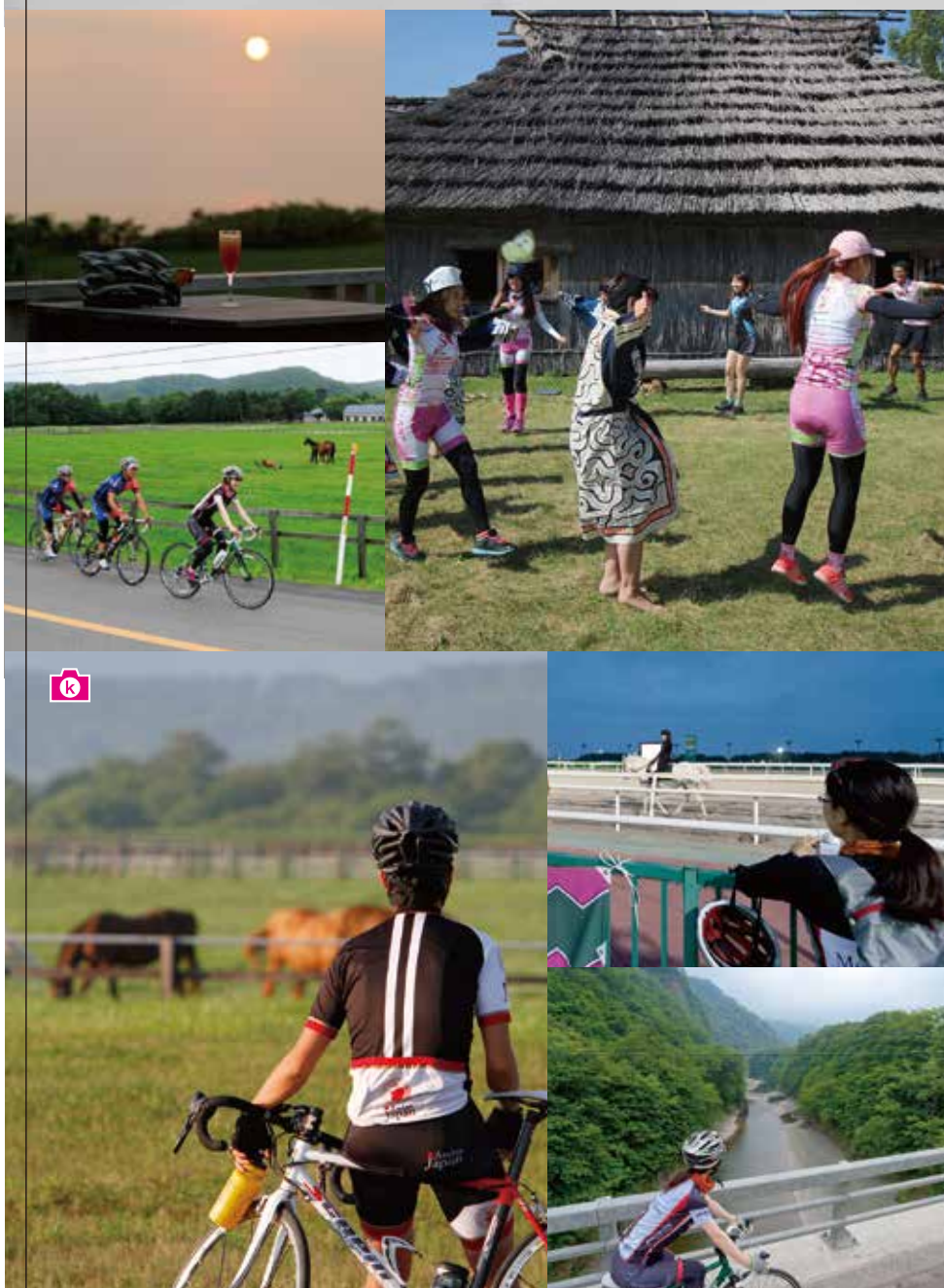


CYCLING AREAS in Hidaka, Hokkaido

WESTERN HIDAKA AREA

The landscape along the gorge of the River Saru and through primeval forest, a beautiful coastline dotted with sunset-watching viewpoints, and the broad, grassy vistas of thoroughbred horse farms. Here is the classic scenery of Hidaka.

Online videos available
ひだかサイクル



Services for cyclists

When you order, show this map and a helmet or gloves or something else that indicates you are a cyclist.

Note: Services are available through the end of December 2018. (However, some establishments will continue offering them thereafter.)

Start / Goal
Convenience store
Lavatory
Drugstore
WiFi hotspot
Lavatory
View point
Danger
Vending machine

Points of Interest:

- 16 Road station Jukai load Hidaka
- 17 Café Yurin
- 18 Tsubaki Salon
- 19 Monbetsu Racecourse
- 20 Bench time
- 21 Les code Museum
- 22 Hot water of Les code
- 23 Tsubaki Salon
- 24 Bench time
- 25 Les code Museum
- 26 Hot water of Les code
- 27 Hotel Laurel
- 28 Delicious of mansion Tenmasa
- 29 Yukiou log café
- 30 Shin-hidaka-Niikappu course (161.9km)
- 31 Shin-hidaka course (79.4km)
- 32 MK Ranch
- 33 Hotel KURAZO
- 34 Mitsuishi Konbu
- 35 The dishes Amaya
- 36 Nijukken Road
- 37 Niikappu course (65.2km)
- 38 Travelers' lodge Fukufuka-tei
- 39 Hidaka-Biratori-Niikappu course (95.1km)
- 40 Tsubaki Salon
- 41 Bench time
- 42 Les code Museum
- 43 Hot water of Les code
- 44 Hotel Laurel
- 45 Delicious of mansion Tenmasa
- 46 Yukiou log café
- 47 Shin-hidaka-Niikappu course (161.9km)
- 48 Shin-hidaka course (79.4km)
- 49 MK Ranch
- 50 Hotel KURAZO
- 51 Mitsuishi Konbu
- 52 The dishes Amaya
- 53 Nijukken Road
- 54 Niikappu course (65.2km)
- 55 Travelers' lodge Fukufuka-tei
- 56 Hidaka-Biratori-Niikappu course (95.1km)
- 57 Tsubaki Salon
- 58 Bench time
- 59 Les code Museum
- 60 Hot water of Les code
- 61 Hotel Laurel
- 62 Delicious of mansion Tenmasa
- 63 Yukiou log café
- 64 Shin-hidaka-Niikappu course (161.9km)
- 65 Shin-hidaka course (79.4km)
- 66 MK Ranch
- 67 Hotel KURAZO
- 68 Mitsuishi Konbu
- 69 The dishes Amaya
- 70 Nijukken Road
- 71 Niikappu course (65.2km)
- 72 Travelers' lodge Fukufuka-tei
- 73 Hidaka-Biratori-Niikappu course (95.1km)
- 74 Tsubaki Salon
- 75 Bench time
- 76 Les code Museum
- 77 Hot water of Les code
- 78 Hotel Laurel
- 79 Delicious of mansion Tenmasa
- 80 Yukiou log café
- 81 Shin-hidaka-Niikappu course (161.9km)
- 82 Shin-hidaka course (79.4km)
- 83 MK Ranch
- 84 Hotel KURAZO
- 85 Mitsuishi Konbu
- 86 The dishes Amaya
- 87 Nijukken Road
- 88 Niikappu course (65.2km)
- 89 Travelers' lodge Fukufuka-tei
- 90 Hidaka-Biratori-Niikappu course (95.1km)
- 91 Tsubaki Salon
- 92 Bench time
- 93 Les code Museum
- 94 Hot water of Les code
- 95 Hotel Laurel
- 96 Delicious of mansion Tenmasa
- 97 Yukiou log café
- 98 Shin-hidaka-Niikappu course (161.9km)
- 99 Shin-hidaka course (79.4km)
- 100 MK Ranch
- 101 Hotel KURAZO
- 102 Mitsuishi Konbu
- 103 The dishes Amaya
- 104 Nijukken Road
- 105 Niikappu course (65.2km)
- 106 Travelers' lodge Fukufuka-tei
- 107 Hidaka-Biratori-Niikappu course (95.1km)
- 108 Tsubaki Salon
- 109 Bench time
- 110 Les code Museum
- 111 Hot water of Les code
- 112 Hotel Laurel
- 113 Delicious of mansion Tenmasa
- 114 Yukiou log café
- 115 Shin-hidaka-Niikappu course (161.9km)
- 116 Shin-hidaka course (79.4km)
- 117 MK Ranch
- 118 Hotel KURAZO
- 119 Mitsuishi Konbu
- 120 The dishes Amaya
- 121 Nijukken Road
- 122 Niikappu course (65.2km)
- 123 Travelers' lodge Fukufuka-tei
- 124 Hidaka-Biratori-Niikappu course (95.1km)
- 125 Tsubaki Salon
- 126 Bench time
- 127 Les code Museum
- 128 Hot water of Les code
- 129 Hotel Laurel
- 130 Delicious of mansion Tenmasa
- 131 Yukiou log café
- 132 Shin-hidaka-Niikappu course (161.9km)
- 133 Shin-hidaka course (79.4km)
- 134 MK Ranch
- 135 Hotel KURAZO
- 136 Mitsuishi Konbu
- 137 The dishes Amaya
- 138 Nijukken Road
- 139 Niikappu course (65.2km)
- 140 Travelers' lodge Fukufuka-tei
- 141 Hidaka-Biratori-Niikappu course (95.1km)
- 142 Tsubaki Salon
- 143 Bench time
- 144 Les code Museum
- 145 Hot water of Les code
- 146 Hotel Laurel
- 147 Delicious of mansion Tenmasa
- 148 Yukiou log café
- 149 Shin-hidaka-Niikappu course (161.9km)
- 150 Shin-hidaka course (79.4km)
- 151 MK Ranch
- 152 Hotel KURAZO
- 153 Mitsuishi Konbu
- 154 The dishes Amaya
- 155 Nijukken Road
- 156 Niikappu course (65.2km)
- 157 Travelers' lodge Fukufuka-tei
- 158 Hidaka-Biratori-Niikappu course (95.1km)
- 159 Tsubaki Salon
- 160 Bench time
- 161 Les code Museum
- 162 Hot water of Les code
- 163 Hotel Laurel
- 164 Delicious of mansion Tenmasa
- 165 Yukiou log café
- 166 Shin-hidaka-Niikappu course (161.9km)
- 167 Shin-hidaka course (79.4km)
- 168 MK Ranch
- 169 Hotel KURAZO
- 170 Mitsuishi Konbu
- 171 The dishes Amaya
- 172 Nijukken Road
- 173 Niikappu course (65.2km)
- 174 Travelers' lodge Fukufuka-tei
- 175 Hidaka-Biratori-Niikappu course (95.1km)
- 176 Tsubaki Salon
- 177 Bench time
- 178 Les code Museum
- 179 Hot water of Les code
- 180 Hotel Laurel
- 181 Delicious of mansion Tenmasa
- 182 Yukiou log café
- 183 Shin-hidaka-Niikappu course (161.9km)
- 184 Shin-hidaka course (79.4km)
- 185 MK Ranch
- 186 Hotel KURAZO
- 187 Mitsuishi Konbu
- 188 The dishes Amaya
- 189 Nijukken Road
- 190 Niikappu course (65.2km)
- 191 Travelers' lodge Fukufuka-tei
- 192 Hidaka-Biratori-Niikappu course (95.1km)
- 193 Tsubaki Salon
- 194 Bench time
- 195 Les code Museum
- 196 Hot water of Les code
- 197 Hotel Laurel
- 198 Delicious of mansion Tenmasa
- 199 Yukiou log café
- 200 Shin-hidaka-Niikappu course (161.9km)
- 201 Shin-hidaka course (79.4km)
- 202 MK Ranch
- 203 Hotel KURAZO
- 204 Mitsuishi Konbu
- 205 The dishes Amaya
- 206 Nijukken Road
- 207 Niikappu course (65.2km)
- 208 Travelers' lodge Fukufuka-tei
- 209 Hidaka-Biratori-Niikappu course (95.1km)
- 210 Tsubaki Salon
- 211 Bench time
- 212 Les code Museum
- 213 Hot water of Les code
- 214 Hotel Laurel
- 215 Delicious of mansion Tenmasa
- 216 Yukiou log café
- 217 Shin-hidaka-Niikappu course (161.9km)
- 218 Shin-hidaka course (79.4km)
- 219 MK Ranch
- 220 Hotel KURAZO
- 221 Mitsuishi Konbu
- 222 The dishes Amaya
- 223 Nijukken Road
- 224 Niikappu course (65.2km)
- 225 Travelers' lodge Fukufuka-tei
- 226 Hidaka-Biratori-Niikappu course (95.1km)
- 227 Tsubaki Salon
- 228 Bench time
- 229 Les code Museum
- 230 Hot water of Les code
- 231 Hotel Laurel
- 232 Delicious of mansion Tenmasa
- 233 Yukiou log café
- 234 Shin-hidaka-Niikappu course (161.9km)
- 235 Shin-hidaka course (79.4km)
- 236 MK Ranch
- 237 Hotel KURAZO
- 238 Mitsuishi Konbu
- 239 The dishes Amaya
- 240 Nijukken Road
- 241 Niikappu course (65.2km)
- 242 Travelers' lodge Fukufuka-tei
- 243 Hidaka-Biratori-Niikappu course (95.1km)
- 244 Tsubaki Salon
- 245 Bench time
- 246 Les code Museum
- 247 Hot water of Les code
- 248 Hotel Laurel
- 249 Delicious of mansion Tenmasa
- 250 Yukiou log café
- 251 Shin-hidaka-Niikappu course (161.9km)
- 252 Shin-hidaka course (79.4km)
- 253 MK Ranch
- 254 Hotel KURAZO
- 255 Mitsuishi Konbu
- 256 The dishes Amaya
- 257 Nijukken Road
- 258 Niikappu course (65.2km)
- 259 Travelers' lodge Fukufuka-tei
- 260 Hidaka-Biratori-Niikappu course (95.1km)
- 261 Tsubaki Salon
- 262 Bench time
- 263 Les code Museum
- 264 Hot water of Les code
- 265 Hotel Laurel
- 266 Delicious of mansion Tenmasa
- 267 Yukiou log café
- 268 Shin-hidaka-Niikappu course (161.9km)
- 269 Shin-hidaka course (79.4km)
- 270 MK Ranch
- 271 Hotel KURAZO
- 272 Mitsuishi Konbu
- 273 The dishes Amaya
- 274 Nijukken Road
- 275 Niikappu course (65.2km)
- 276 Travelers' lodge Fukufuka-tei
- 277 Hidaka-Biratori-Niikappu course (95.1km)
- 278 Tsubaki Salon
- 279 Bench time
- 280 Les code Museum
- 281 Hot water of Les code
- 282 Hotel Laurel
- 283 Delicious of mansion Tenmasa
- 284 Yukiou log café
- 285 Shin-hidaka-Niikappu course (161.9km)
- 286 Shin-hidaka course (79.4km)
- 287 MK Ranch
- 288 Hotel KURAZO
- 289 Mitsuishi Konbu
- 290 The dishes Amaya
- 291 Nijukken Road
- 292 Niikappu course (65.2km)
- 293 Travelers' lodge Fukufuka-tei
- 294 Hidaka-Biratori-Niikappu course (95.1km)
- 295 Tsubaki Salon
- 296 Bench time
- 297 Les code Museum
- 298 Hot water of Les code
- 299 Hotel Laurel
- 300 Delicious of mansion Tenmasa
- 301 Yukiou log café
- 302 Shin-hidaka-Niikappu course (161.9km)
- 303 Shin-hidaka course (79.4km)
- 304 MK Ranch
- 305 Hotel KURAZO
- 306 Mitsuishi Konbu
- 307 The dishes Amaya
- 308 Nijukken Road
- 309 Niikappu course (65.2km)
- 310 Travelers' lodge Fukufuka-tei
- 311 Hidaka-Biratori-Niikappu course (95.1km)
- 312 Tsubaki Salon
- 313 Bench time
- 314 Les code Museum
- 315 Hot water of Les code
- 316 Hotel Laurel
- 317 Delicious of mansion Tenmasa
- 318 Yukiou log café
- 319 Shin-hidaka-Niikappu course (161.9km)
- 320 Shin-hidaka course (79.4km)
- 321 MK Ranch
- 322 Hotel KURAZO
- 323 Mitsuishi Konbu
- 324 The dishes Amaya
- 325 Nijukken Road
- 326 Niikappu course (65.2km)
- 327 Travelers' lodge Fukufuka-tei
- 328 Hidaka-Biratori-Niikappu course (95.1km)
- 329 Tsubaki Salon
- 330 Bench time
- 331 Les code Museum
- 332 Hot water of Les code
- 333 Hotel Laurel
- 334 Delicious of mansion Tenmasa
- 335 Yukiou log café
- 336 Shin-hidaka-Niikappu course (161.9km)
- 337 Shin-hidaka course (79.4km)
- 338 MK Ranch
- 339 Hotel KURAZO
- 340 Mitsuishi Konbu
- 341 The dishes Amaya
- 342 Nijukken Road
- 343 Niikappu course (65.2km)
- 344 Travelers' lodge Fukufuka-tei
- 345 Hidaka-Biratori-Niikappu course (95.1km)
- 346 Tsubaki Salon
- 347 Bench time
- 348 Les code Museum
- 349 Hot water of Les code
- 350 Hotel Laurel
- 351 Delicious of mansion Tenmasa
- 352 Yukiou log café
- 353 Shin-hidaka-Niikappu course (161.9km)
- 354 Shin-hidaka course (79.4km)
- 355 MK Ranch
- 356 Hotel KURAZO
- 357 Mitsuishi Konbu
- 358 The dishes Amaya
- 359 Nijukken Road
- 360 Niikappu course (65.2km)
- 361 Travelers' lodge Fukufuka-tei
- 362 Hidaka-Biratori-Niikappu course (95.1km)
- 363 Tsubaki Salon
- 364 Bench time
- 365 Les code Museum
- 366 Hot water of Les code
- 367 Hotel Laurel
- 368 Delicious of mansion Tenmasa
- 369 Yukiou log café
- 370 Shin-hidaka-Niikappu course (161.9km)
- 371 Shin-hidaka course (79.4km)
- 372 MK Ranch
- 373 Hotel KURAZO
- 374 Mitsuishi Konbu
- 375 The dishes Amaya
- 376 Nijukken Road
- 377 Niikappu course (65.2km)
- 378 Travelers' lodge Fukufuka-tei
- 379 Hidaka-Biratori-Niikappu course (95.1km)
- 380 Tsubaki Salon
- 381 Bench time
- 382 Les code Museum
- 383 Hot water of Les code
- 384 Hotel Laurel
- 385 Delicious of mansion Tenmasa
- 386 Yukiou log café
- 387 Shin-hidaka-Niikappu course (161.9km)
- 388 Shin-hidaka course (79.4km)
- 389 MK Ranch
- 390 Hotel KURAZO
- 391 Mitsuishi Konbu
- 392 The dishes Amaya
- 393 Nijukken Road
- 394 Niikappu course (65.2km)
- 395 Travelers' lodge Fukufuka-tei
- 396 Hidaka-Biratori-Niikappu course (95.1km)
- 397 Tsubaki Salon
- 398 Bench time
- 399 Les code Museum
- 400 Hot water of Les code
- 401 Hotel Laurel
- 402 Delicious of mansion Tenmasa
- 403 Yukiou log café
- 404 Shin-hidaka-Niikappu course (161.9km)
- 405 Shin-hidaka course (79.4km)
- 406 MK Ranch
- 407 Hotel KURAZO
- 408 Mitsuishi Konbu
- 409 The dishes Amaya
- 410 Nijukken Road
- 411 Niikappu course (65.2km)
- 412 Travelers' lodge Fukufuka-tei
- 413 Hidaka-Biratori-Niikappu course (95.1km)
- 414 Tsubaki Salon
- 415 Bench time
- 416 Les code Museum
- 417 Hot water of Les code
- 418 Hotel Laurel
- 419 Delicious of mansion Tenmasa
- 420 Yukiou log café
- 421 Shin-hidaka-Niikappu course (161.9km)
- 422 Shin-hidaka course (79.4km)
- 423 MK Ranch
- 424 Hotel KURAZO
- 425 Mitsuishi Konbu
- 426 The dishes Amaya
- 427 Nijukken Road
- 428 Niikappu course (65.2km)
- 429 Travelers' lodge Fukufuka-tei
- 430 Hidaka-Biratori-Niikappu course (95.1km)
- 431 Tsubaki Salon
- 432 Bench time
- 433 Les code Museum
- 434 Hot water of Les code
- 435 Hotel Laurel
- 436 Delicious of mansion Tenmasa
- 437 Yukiou log café
- 438 Shin-hidaka-Niikappu course (161.9km)
- 439 Shin-hidaka course (79.4km)
- 440 MK Ranch
- 441 Hotel KURAZO
- 442 Mitsuishi Konbu
- 443 The dishes Amaya
- 444 Nijukken Road
- 445 Niikappu course (65.2km)
- 446 Travelers' lodge Fukufuka-tei
- 447 Hidaka-Biratori-Niikappu course (95.1km)
- 448 Tsubaki Salon
- 449 Bench time
- 450 Les code Museum
- 451 Hot water of Les code
- 452 Hotel Laurel
- 453 Delicious of mansion Tenmasa
- 454 Yukiou log café
- 455 Shin-hidaka-Niikappu course (161.9km)
- 456 Shin-hidaka course (79.4km)
- 457 MK Ranch
- 458 Hotel KURAZO
- 459 Mitsuishi Konbu
- 460 The dishes Amaya
- 461 Nijukken Road
- 462 Niikappu course (65.2km)
- 463 Travelers' lodge Fukufuka-tei
- 464 Hidaka-Biratori-Niikappu course (95.1km)
- 465 Tsubaki Salon
- 466 Bench time
- 467 Les code Museum
- 468 Hot water of Les code
- 469 Hotel Laurel
- 470 Delicious of mansion Tenmasa
- 471 Yukiou log café
- 472 Shin-hidaka-Niikappu course (161.9km)
- 473 Shin-hidaka course (79.4km)
- 474 MK Ranch
- 475 Hotel KURAZO
- 476 Mitsuishi Konbu
- 477 The dishes Amaya
- 478 Nijukken Road
- 479 Niikappu course (65.2km)
- 480 Travelers' lodge Fukufuka-tei
- 481 Hidaka-Biratori-Niikappu course (95.1km)
- 482 Tsubaki Salon
- 483 Bench time
- 484 Les code Museum
- 485 Hot water of Les code
- 486 Hotel Laurel
- 487 Delicious of mansion Tenmasa
- 488 Yukiou log café
- 489 Shin-hidaka-Niikappu course (161.9km)
- 490 Shin-hidaka course (79.4km)
- 491 MK Ranch
- 492 Hotel KURAZO
- 493 Mitsuishi Konbu
- 494 The dishes Amaya
- 495 Nijukken Road
- 496 Niikappu course (65.2km)
- 497 Travelers' lodge Fukufuka-tei
- 498 Hidaka-Biratori-Niikappu course (95.1km)
- 499 Tsubaki Salon
- 500 Bench time
- 501 Les code Museum
- 502 Hot water of Les code
- 503 Hotel Laurel
- 504 Delicious of mansion Tenmasa
- 505 Yukiou log café
- 506 Shin-hidaka-Niikappu course (161.9km)
- 507 Shin-hidaka course (79.4km)
- 508 MK Ranch
- 509 Hotel KURAZO
- 510 Mitsuishi Konbu
- 511 The dishes Amaya
- 512 Nijukken Road
- 513 Niikappu course (65.2km)
- 514 Travelers' lodge Fukufuka-tei
- 515 Hidaka-Biratori-Niikappu course (95.1km)
- 516 Tsubaki Salon
- 517 Bench time
- 518 Les code Museum
- 519 Hot water of Les code
- 520 Hotel Laurel
- 521 Delicious of mansion Tenmasa
- 522 Yukiou log café
- 523 Shin-hidaka-Niikappu course (161.9km)
- 524 Shin-hidaka course (79.4km)
- 525 MK Ranch
- 526 Hotel KURAZO
- 527 Mitsuishi Konbu
- 528 The dishes Amaya
- 529 Nijukken Road
- 530 Niikappu course (65.2km)
- 531 Travelers' lodge Fukufuka-tei
- 532 Hidaka-Biratori-Niikappu course (95.1km)
- 533 Tsubaki Salon
- 534 Bench time
- 535 Les code Museum
- 536 Hot water of Les code
- 537 Hotel Laurel
- 538 Delicious of mansion Tenmasa
- 539 Yukiou log café
- 540 Shin-hidaka-Niikappu course (161.9km)
- 541 Shin-hidaka course (79.4km)
- 542 MK Ranch
- 543 Hotel KURAZO
- 544 Mitsuishi Konbu
- 545 The dishes Amaya
- 546 Nijukken Road
- 547 Niikappu course (65.2km)
- 548 Travelers' lodge Fukufuka-tei
- 549 Hidaka-Biratori-Niikappu course (95.1km)
- 550 Tsubaki Salon
- 551 Bench time
- 552 Les code Museum
- 553 Hot water of Les code
- 554 Hotel Laurel
- 555 Delicious of mansion Tenmasa
- 556 Yukiou log café
- 557 Shin-hidaka-Niikappu course (161.9km)
- 558 Shin-hidaka course (79.4km)
- 559 MK Ranch
- 560 Hotel KURAZO
- 561 Mitsuishi Konbu
- 562 The dishes Amaya
- 563 Nijukken Road
- 564 Niikappu course (65.2km)
- 565 Travelers' lodge Fukufuka-tei
- 566 Hidaka-Biratori-Niikappu course (95.1km)
- 567 Tsubaki Salon
- 568 Bench time
- 569 Les code Museum
- 570 Hot water of Les code
- 571 Hotel Laurel
- 572 Delicious of mansion Tenmasa
- 573 Yukiou log café
- 574 Shin-hidaka-Niikappu course (161.9km)
- 575 Shin-hidaka course (79.4km)
- 576 MK Ranch
- 577 Hotel KURAZO
- 578 Mitsuishi Konbu
- 579 The dishes Amaya
- 580 Nijukken Road
- 581 Niikappu course (65.2km)
- 582 Travelers' lodge Fukufuka-tei
- 583 Hidaka-Biratori-Niikappu course (95.1km)
- 584 Tsubaki Salon
- 585 Bench time
- 586 Les code Museum
- 587 Hot water of Les code
- 588 Hotel Laurel
- 589 Delicious of mansion Tenmasa
- 590 Yukiou log café
- 591 Shin-hidaka-Niikappu course (161.9km)
- 592 Shin-hidaka course (79.4km)
- 593 MK Ranch
- 594 Hotel KURAZO
- 595 Mitsuishi Konbu
- 596 The dishes Amaya
- 597 Nijukken Road
- 598 Niikappu course (65.2km)
- 599 Travelers' lodge Fukufuka-tei
- 600 Hidaka-Biratori-Niikappu course (95.1km)
- 601 Tsubaki Salon
- 602 Bench time
- 603 Les code Museum
- 604 Hot water of Les code
- 605 Hotel Laurel
- 606 Delicious of mansion Tenmasa
- 607 Yukiou log café
- 608 Shin-hidaka-Niikappu course (161.9km)
- 609 Shin-hidaka course (79.4km)
- 610 MK Ranch
- 611 Hotel KURAZO
- 612 Mitsuishi Konbu
- 613 The dishes Amaya
- 614 Nijukken Road
- 615 Niikappu course (65.2km)
- 616 Travelers' lodge Fukufuka-tei
- 617 Hidaka-Biratori-Niikappu course (95.1km)
- 618 Tsubaki Salon
- 619 Bench time
- 620 Les code Museum
- 621 Hot water of Les code
- 622 Hotel Laurel
- 623 Delicious of mansion Tenmasa
- 624 Yukiou log café
- 625 Shin-hidaka-Niikappu course (161.9km)
- 626 Shin-hidaka course (79.4km)
- 627 MK Ranch
- 628 Hotel KURAZO
- 629 Mitsuishi Konbu
- 630 The dishes Amaya
- 631 Nijukken Road
- 632 Niikappu course (65.2km)
- 633 Travelers' lodge Fukufuka-tei
- 634 Hidaka-Biratori-Niikappu course (95.1km)
- 635 Tsubaki Salon
- 636 Bench time
- 637 Les code Museum
- 638 Hot water of Les code
- 639 Hotel Laurel
- 640 Delicious of mansion Tenmasa
- 641 Yukiou log café
- 642 Shin-hidaka-Niikappu course (161.9km)
- 643 Shin-hidaka course (79.4km)
- 644 MK Ranch
- 645 Hotel KURAZO
- 646 Mitsuishi Konbu
- 647 The dishes Amaya
- 648 Nijukken Road
- 649 Niikappu course (65.2km)
- 650 Travelers' lodge Fukufuka-tei
- 651 Hidaka-Biratori-Niikappu course (95.1km)
- 652 Tsubaki Salon
- 653 Bench time
- 654 Les code Museum
- 655 Hot water of Les code
- 656 Hotel Laurel
- 657 Delicious of mansion Tenmasa
- 658 Yukiou log café
- 659 Shin-hidaka-Niikappu course (161.9km)
- 660 Shin-hidaka course (79.4km)
- 661 MK Ranch
- 662 Hotel KURAZO
- 663 Mitsuishi Konbu
- 664 The dishes Amaya
- 665 Nijukken Road
- 666 Niikappu course (65.2km)
- 667 Travelers' lodge Fukufuka-tei
- 668 Hidaka-Biratori-Niikappu course (95.1km)
- 669 Tsubaki Salon
- 670 Bench time
- 671 Les code Museum
- 672 Hot water of Les code
- 673 Hotel Laurel
- 674 Delicious of mansion Tenmasa
- 675 Yukiou log café
- 676 Shin-hidaka-Niikappu course (161.9km)
- 677 Shin-hidaka course (79.4km)
- 678 MK Ranch
- 679 Hotel KURAZO
- 680 Mitsuishi Konbu
- 681 The dishes Amaya
- 682 Nijukken Road
- 683 Niikappu course (65.2km)
- 684 Travelers' lodge Fukufuka-tei
- 685 Hidaka-Biratori-Niikappu course (95.1km)
- 686 Tsubaki Salon
- 687 Bench time
- 688 Les code Museum
- 689 Hot water of Les code
- 690 Hotel Laurel
- 691 Delicious of mansion Tenmasa
- 692 Yukiou log café
- 693 Shin-hidaka-Niikappu course (161.9km)
- 694 Shin-hidaka course (79.4km)
- 695 MK Ranch
- 696 Hotel KURAZO
- 697 Mitsuishi Konbu
- 698 The dishes Amaya
- 699 Nijukken Road
- 700 Niikappu course (65.2km)
- 701 Travelers' lodge Fukufuka-tei
- 702 Hidaka-Biratori-Niikappu course (95.1km)
- 703 Tsubaki Salon
- 704 Bench time
- 705 Les code Museum
- 706 Hot water of Les code
- 707 Hotel Laurel
- 708 Delicious of mansion Tenmasa
- 709 Yukiou log café
- 710 Shin-hidaka-Niikappu course (161.9km)
- 711 Shin-hidaka course (79.4km)
- 712 MK Ranch
- 713 Hotel KURAZO
- 714 Mitsuishi Konbu
- 715 The dishes Amaya
- 716 Nijukken Road
- 717 Niikappu course (65.2km)
- 718 Travelers' lodge Fukufuka-tei
- 719 Hidaka-Biratori-Niikappu course (95.1km)
- 720 Tsubaki Salon
- 721 Bench time
- 722 Les code Museum
- 723 Hot water of Les code
- 724 Hotel Laurel
- 725 Delicious of mansion Tenmasa
- 726 Yukiou log café
- 727 Shin-hidaka-Niikappu course (161.9km)
- 728 Shin-hidaka course (79.4km)
- 729 MK Ranch
- 730 Hotel KURAZO
- 731 Mitsuishi Konbu
- 732 The dishes Amaya
- 733 Nijukken Road
- 734 Niikappu course (65.2km)
- 735 Travelers' lodge Fukufuka-tei
- 736 Hidaka-Biratori-Niikappu course (95.1km)
- 737 Tsubaki Salon
- 738 Bench time
- 739 Les code Museum
- 740 Hot water of Les code
- 741 Hotel Laurel
- 742 Delicious of mansion Tenmasa
- 743 Yukiou log café
- 744 Shin-hidaka-Niikappu course (161.9km)
- 745 Shin-hidaka course (79.4km)
- 746 MK Ranch
- 747 Hotel KURAZO
- 748 Mitsuishi Konbu
- 749 The dishes Amaya
- 750 Nijukken Road
- 751 Niikappu course (65.2km)
- 752 Travelers' lodge Fukufuka-tei
- 753 Hidaka-Biratori-Niikappu course (95.1km)
- 754 Tsubaki Salon
- 755 Bench time
- 756 Les code Museum
- 757 Hot water of Les code
- 758 Hotel Laurel
- 759 Delicious of mansion Tenmasa
- 760 Yukiou log café
- 761 Shin-hidaka-Niikappu course (161.9km)
- 762 Shin-hidaka course (79.4km)
- 763 MK Ranch
- 764 Hotel KURAZO
- 765 Mitsuishi Konbu
- 766 The dishes Amaya
- 767 Nijukken Road
- 768 Niikappu course (65.2km)
- 769 Travelers' lodge Fukufuka-tei
- 770 Hidaka-Biratori-Niikappu course (95.1km)
- 771 Tsubaki Salon
- 772 Bench time
- 773 Les code Museum
- 774 Hot water of Les code
- 775 Hotel Laurel
- 776 Delicious of mansion Tenmasa
- 777 Yukiou log café
- 778 Shin-hidaka-Niikappu course (161.9km)
- 779 Shin-hidaka course (79.4km)
- 780 MK Ranch
- 781 Hotel KURAZO
- 782 Mitsuishi Konbu
- 783 The dishes