

The flowers and beaches of Hidaka



SCAN HERE!

[Shinhidaka Tourism Association homepage](#)

Cherry blossoms, Shinhidaka



Shinhidaka, where you can enjoy the blooming flowers and the amazing sea

One of the first places to see cherry blossoms in Hokkaido is the Nijukken Road Cherry Trees. More than 2,000 cherry trees are planted along an approximately 7 km stretch of the road, and in spring, both sides of the road are filled with cherry blossoms, creating a breathtaking sight. In addition to cherry blossoms, the area is also famous for its beautiful blue delphiniums, which grow brilliantly in the cool climate of Shinhidaka which does not have a lot of snow.



Delphiniums



Nijukken Road Cherry Trees



Mitsubishi Seaside Park

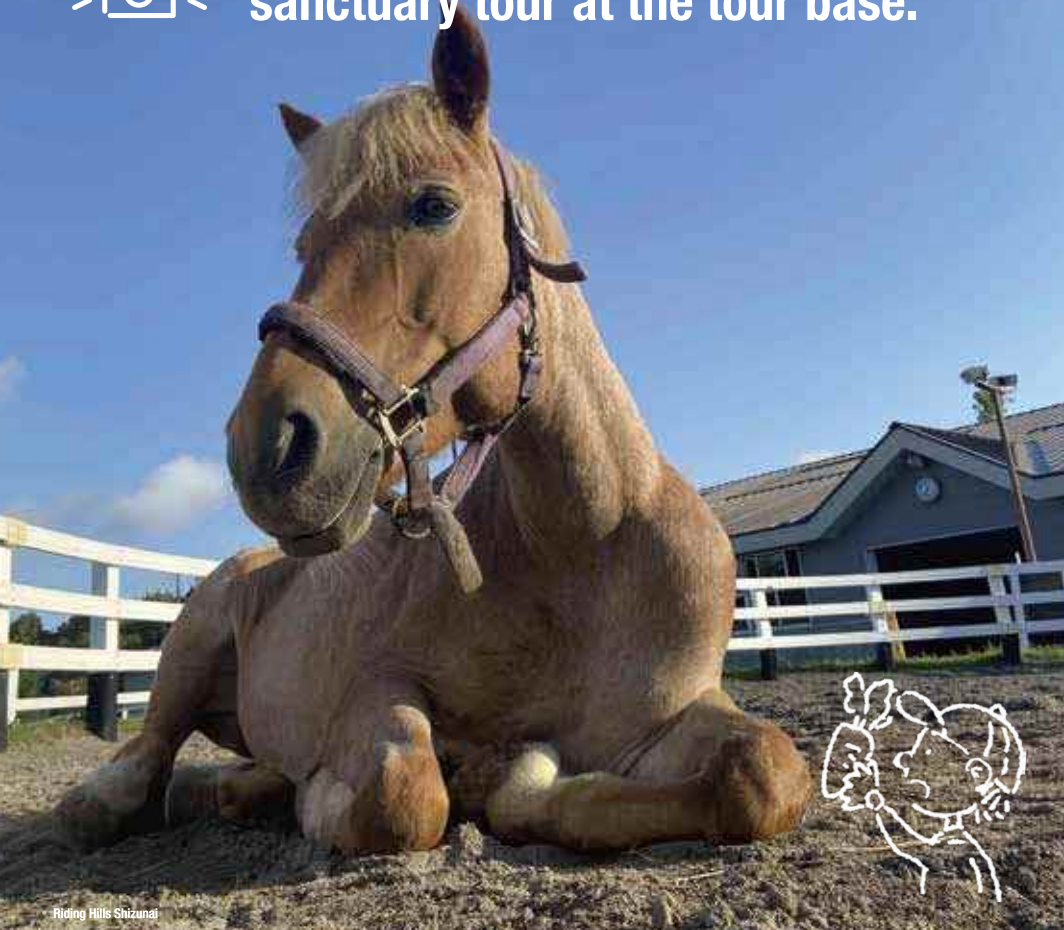
Mitsubishi Seaside Park is popular with families. In summer, day camping is available at Fureai Beach, where you can enjoy barbecues and having fun on the shore. The auto camping area on the beach nearby is the perfect spot for star gazing. The Mitsubishi Kombu Onsen Kurazo is located nearby, and its boat-shaped open-air bath with a view of the Pacific Ocean will help heal your body after a day of fun.



Mitsubishi Kombu Onsen Kurazo



Get information about the horse sanctuary tour at the tour base.



Riding Hills Shizunai



Access Shinhidaka

- About 2 hours from Sapporo via Hidaka Expressway
- About 1 hour and 30 minutes from New Chitose Airport via Hidaka Expressway



Riding Hills Shizunai

The Hidaka region is home to many horse facilities, and Hidaka Racehorse Breeding Area Information Center is the perfect base for visitors to this horse breeding area. You can get information about visiting each ranch, ranch etiquette, and tourist ranches where you can ride horses. Check the information at the information desk for ways to help protect the horses. One of the best horse riding facilities in Shinhidaka is Riding Hills Shizunai. There are courses for beginners, trekking courses with a view of the sea, and other courses to suit all levels of experience.



Swans on the Mitsuiushi River

Swans visiting the two rivers flowing through Shinhidaka, showing signs of the season.

The Mitsuiushi and Shizunai Rivers in Shinhidaka are known as spots where many swans migrate to every winter. Be sure to take a picture of them swimming gracefully along the surface of the river, a scene typical of Hokkaido in winter.

Enjoy the sites and rides of Hidaka



SCAN HERE!

Urakawa Tourism Association homepage



JRA Hidaka breeding ranch, Urakawa

Urakawa, a place to see, ride, and interact with horses



All of Hidaka is famous as a horse breeding area, and Urakawa in Hidaka is known as a town with a lot of horse-related facilities. At AERU Urakawa Yushun Village, you can see former racehorses and have fun riding horses. There is also an accommodation facility, which allows you to enjoy an unforgettable day with the horses.



AERU Urakawa Yushun Village

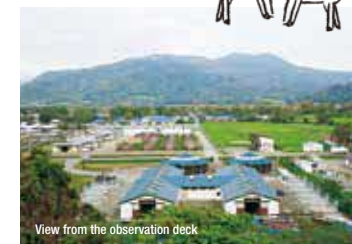


Horse riding



JRA Hidaka breeding ranch

At the JRA Hidaka breeding ranch, many thoroughbreds are being bred to become the great horses of the future. On a vast site of about 15 square kilometers, there are various facilities such as a 1 km long indoor straight track and an indoor track, and they are putting efforts into training horses that can be competitive globally. From the observatory, you can see the horses running around the ranch.



View from the observation deck



The pastoral scenery
is perfect for a drive.



Yushun Sakura Road



Lupinus Hill

As the area is a horse breeding area, there are pastoral landscapes everywhere. The Urakawa Thoroughbred Road in particular is a great place to take a drive and enjoy the view of the sprawling pastureland. As the name implies, there are about 1,000 cherry trees planted along the Yushun Sakura Road. The illumination here is also a magical sight. Urakawa has another famous place for flowers called Lupinus Hill, where flowers bloom from season to season. The best time to visit is in the summer, when you can see the entire harbor beyond the flowers.



Access Urakawa

- About 2 hours and 50 minutes from Sapporo via Hidaka Expressway
- About 2 hours and 20 minutes from New Chitose Airport via Hidaka Expressway



Urakawa Museum Yushun No Mon gate

The town's history is the history
of renowned horses.



The town has a history of approximately 100 years of breeding renowned horses, and is home to a number of facilities that convey this history. The statue of Shinzan, the first horse to win five championships in the history of Japanese horse racing, and the JRA Memorial Hall, which displays historical materials on improvement to breeding techniques, are a few of the ideal places to visit. You can also have a great time looking for horse motifs here and there, such as the Yushun No Mon gate in front of the Urakawa Museum.

The waters and mountains of Hidaka



SCAN HERE!

UNESCO Global Geopark Mt. Apoi



Oyakoiwa, Samani

Experience the waters and mountains of Samani



In the waters of Samani, which is recognized as a UNESCO World Geopark, you will be greeted by Oyakoiwa, which looks like a parent and child snuggled up together. Oyakoiwa Fureai Beach, which features a great view of Oyakoiwa, is crowded with families from early July to late August, and is a popular spot for swimming, camping, and fishing.

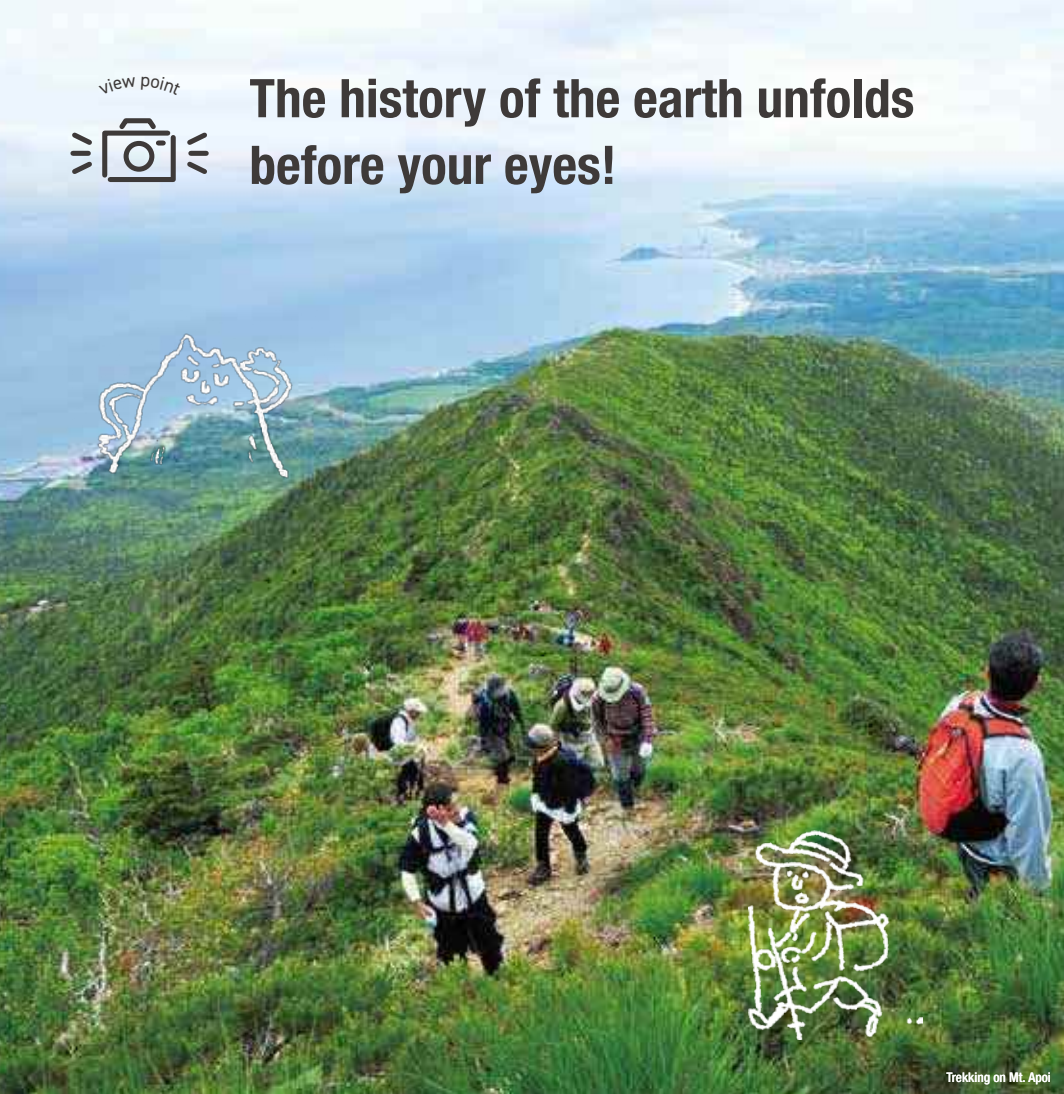


You will be amazed by the artistic scenery created by nature, such as the ravine of peridotite formed by the Horoman River, and Cape Enrumu, which used to be an island but was connected to the land by sand carried by the waves. The Mt. Apoi Geopark Visitor Center is a great place to learn more about the nature, history, and culture of Samani.





The history of the earth unfolds before your eyes!

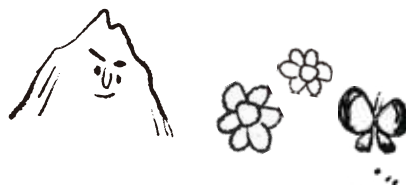


Trekking on Mt. Apoi



Hidakaso (Callianthemum miyabeaenum)

Mt. Apoi, located at the southern end of the Hidaka mountain range, is made of an unusual rock called peridotite, and although it is not very high (810 meters), it is home to many alpine plants, including endemic plants such as hidakaso (*Callianthemum miyabeaenum*) and ezo-kouzorina (*Hypochaeris*). Mt. Apoi, known for its unique environment, has been selected as a special natural monument of Japan and as one of the 100 best mountains for flowers.



Access Samani

- About 3 hours and 10 minutes from Sapporo via Hidaka Expressway
- About 2 hours and 40 minutes from New Chitose Airport via Hidaka Expressway



Whelk

Amazing mountains make for amazing waters.



You will want to satisfy your appetite after enjoying the natural beauty of the mountains and the sea. Samani is a fishing ground where the clear mountain streams, the Pacific Ocean, and the Oyashio Current and Kuroshio Current mix, and there is an abundance of seafood packed with great flavor.

Enjoy a hearty meal at one of the town's dining establishments, made with loads of fresh seafood, such as the nationally famous whelk, as well as Matsukawa flounder and salmon.

Feel the wind and the waves of Hidaka

SCAN HERE!

Hokkaido Erimo Town Sightseeing Navi

Cape Erimo, Erimo



The charm of Erimo is in its turbulent wind and waves

Erimo is known for Cape Erimo which is located at the southernmost tip of the Hidaka mountain range, and has an astonishing view of rocky reefs stretching for about 2 km. It is one of the windiest areas in Japan, with 10m/s winds blowing more than 260 days a year.

The Cape Erimo Wind Museum Kaze no Yakata not only offers a stunning view from the observatory, but is also popular for its interactive corner where you can experience the 25 m/s Erimo wind.



Cape Erimo Wind Museum Kaze no Yakata



Erimo Kosen Route



Kelp Fishing Boat Cruise

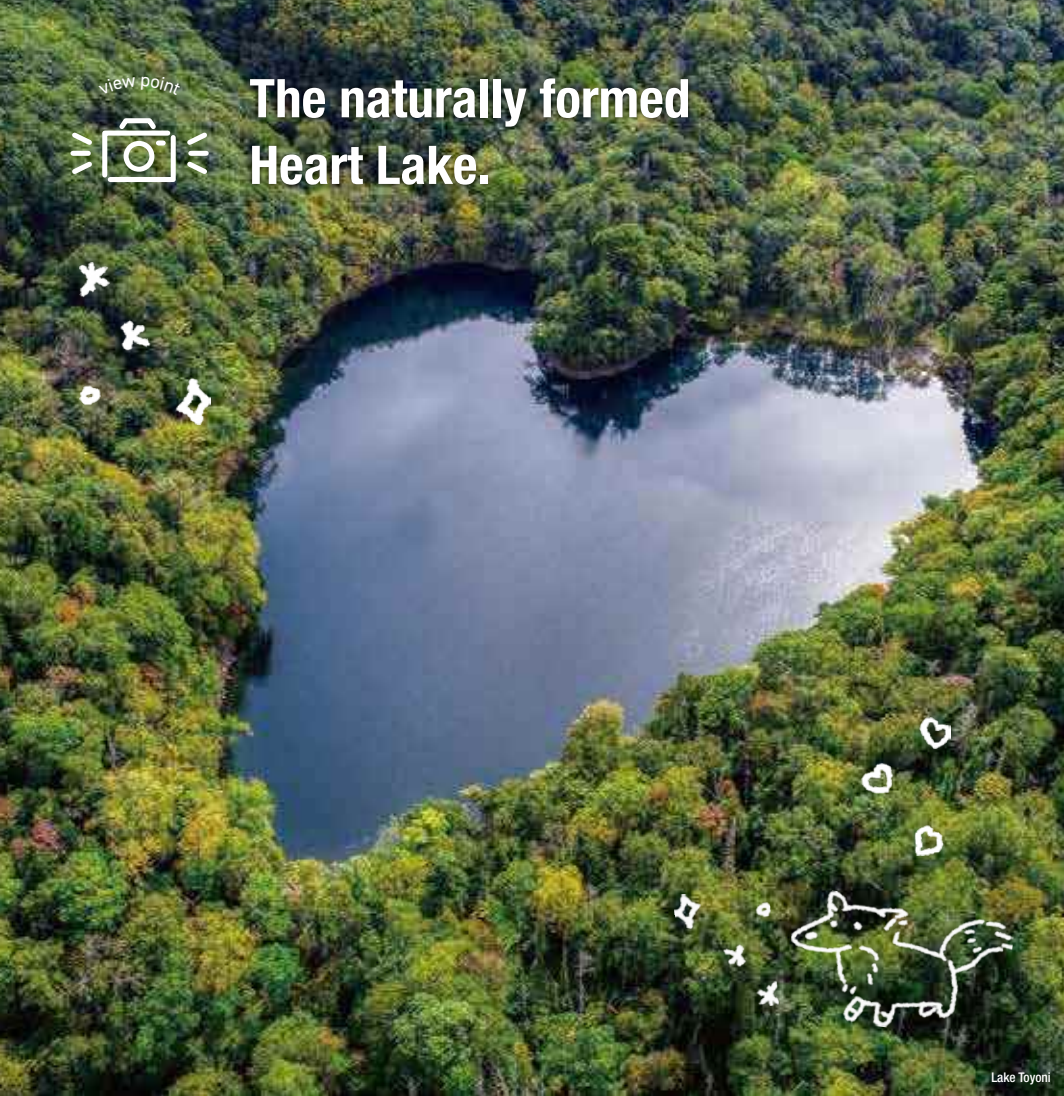
After enjoying Cape Erimo from the land, it's time to enjoy it from the sea. The reefs visible from Cape Erimo are home to wild harbor seals. If you are lucky, you can spot them from land, but if you want to get a closer look, we recommend a kelp fishing boat cruise around the cape or a sea kayak tour. If you are lucky, you may be able to see seals basking in the sun on the reef.



Harbor seal



The naturally formed Heart Lake.



Lake Toyoni



Japanese pika

Lake Toyoni, the only natural lake in Hidaka, is a very romantic place because when you look at it from above, it's shaped like a heart! Enjoy a hike along the shores of the lake surrounded by mountains. The area is also a habitat for the rare Japanese pika. You will be lucky if you can see them, as they are very small and quick. In winter, you might even see shimaenaga (long-tailed tit).



Shimaenaga (Long-tailed tit)



EZO ...
NAKUSAGI



Access Erimo

About 3 hours and 40 minutes from Sapporo via Hidaka Expressway
About 3 hours and 10 minutes from New Chitose Airport via Hidaka Expressway



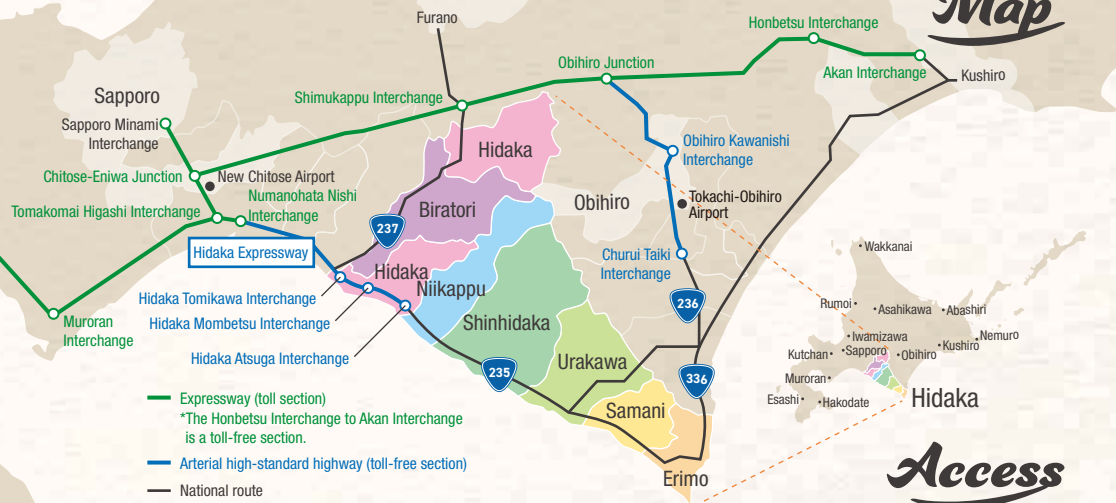
Hyakunin Hama Beach

Have fun amongst the magnificent nature.

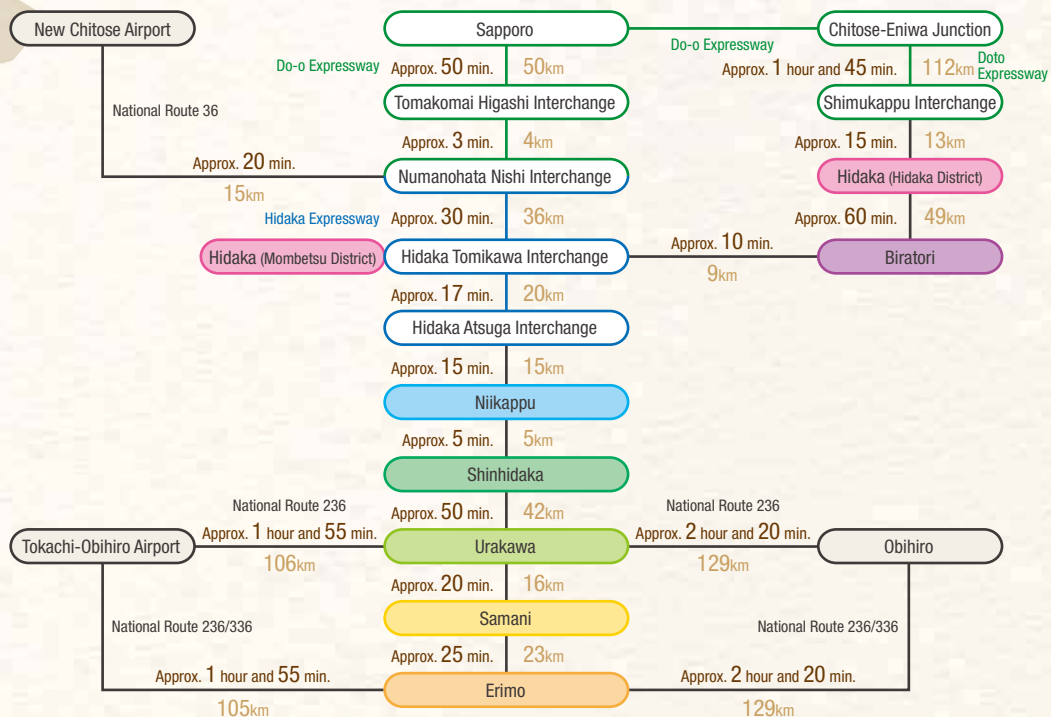
Hyakunin Hama Beach is a scenic spot with a vast sandy coastline of about 10 km from north to south and a maximum width of about 200 m. The beach features large waves caused by the strong winds of Erimo. There is an auto camping ground and a park golf course in the vicinity, where you can enjoy nature away from the hustle and bustle of the city.



Map



Access



Tourism information is available at



Hokkaido Hidaka Tourism Navi.

The Hidaka Area Map



provides useful information for taking a drive through Hidaka.

Check the social media accounts of the Hidaka Subprefectural Bureau for the latest information on Hidaka.



Twitter



Instagram



Facebook